

CORONAVIRUS (COVID-19) IMPACT PLANNING REPORT

San Luis Obispo County, CA

287,468

Population

108,279

Households

2.51

Avg Size Household

40.7

Median Age

\$74,462

Median Household Income

\$612,780

Median Home Value

129

Wealth Index

61

Housing Affordability

58

Diversity Index

POPULATION AND BUSINESSES



84.4

Daytime Population per Square Mile



14,640

Total Businesses



123,926

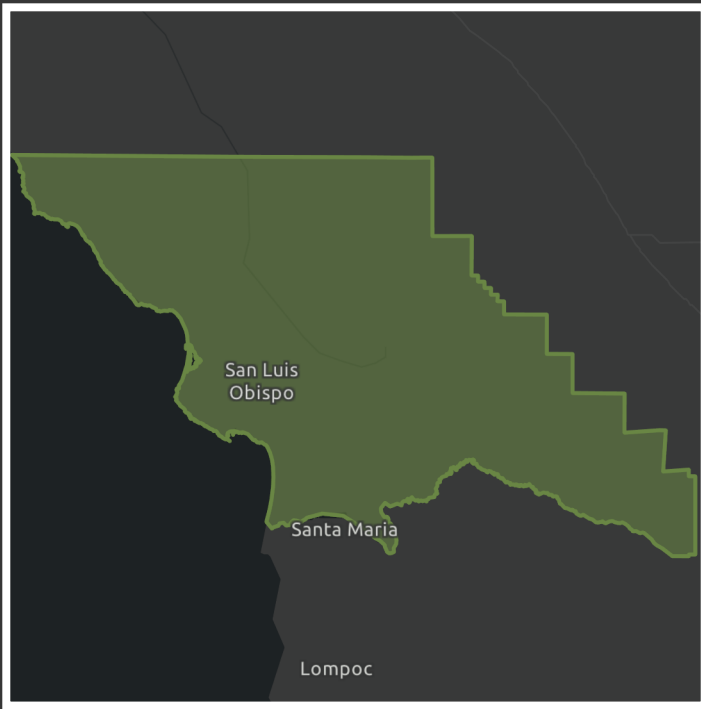
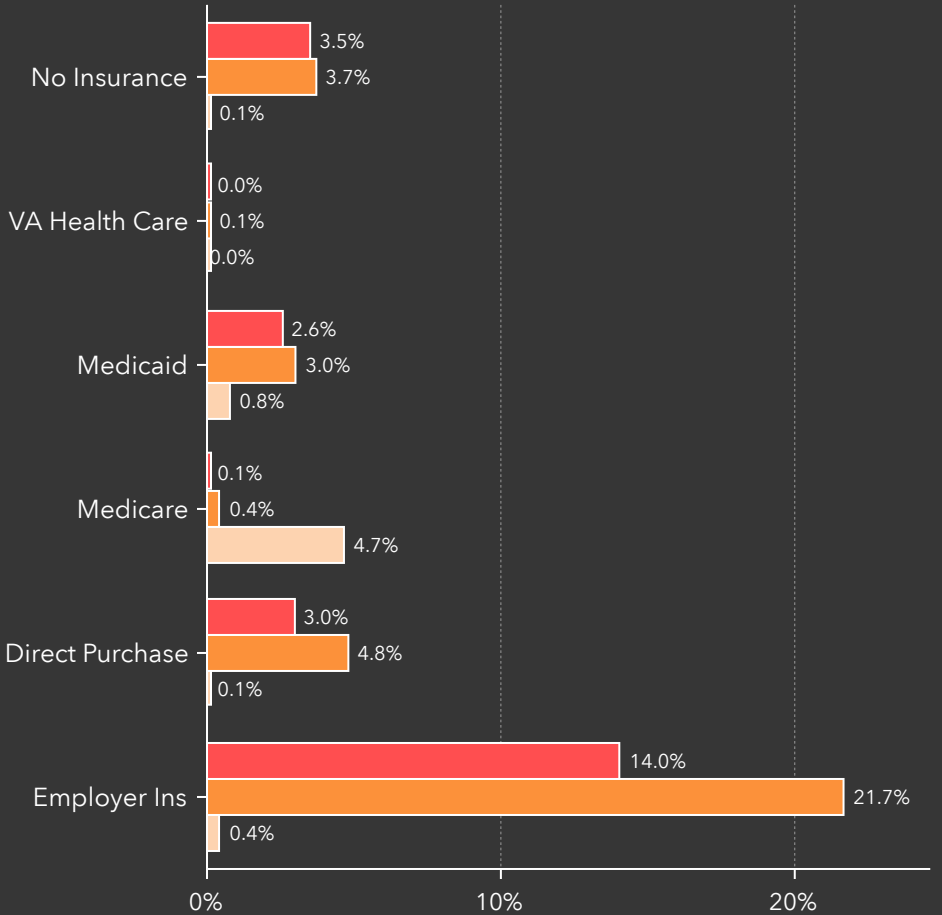
Total Employees

HEALTH INSURANCE COVERAGE (ACS)

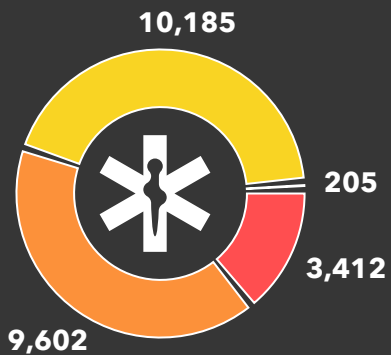
Pop 19-34

Pop 35-64

Pop 65+



POPULATION NO HEALTH INSURANCE (ACS)



0-18 19-34 35-64 Age 65+

POVERTY AND LANGUAGE



13%

Households Below the Poverty Level



13,175

Households Below the Poverty Level



358

Pop 65+ Speak Spanish & No English

AT RISK POPULATION



24,240

Households With Disability



56,822

Population 65+



4,779

Households Without Vehicle



Source: Esri forecasts for 2019, U.S. Census Bureau 2013-2017 American Community Survey (ACS) Data, Businesses counts from Infogroup

Note: Medicaid values for population 65+ is defined as Medicaid plus Medicare. For other age groups it is Medicaid only. Source 2013-2017 American Community Survey (ACS) Data.

LANGUAGE (ACS) Age 5-17 18-64 Age 65+ Total

English Only 28,595 143,814 45,554 217,963

Spanish 7,884 26,715 2,693 37,292

Spanish & English Well 7,365 19,449 1,995

Spanish & English Not Well 459 5,168 340 5,967

Indo-European 458 3,120 1,457 6,271

Indo-European & English Well 457 3,069 1,338

Indo-Euro & English Not Well 0 51 119 170

Asian-Pacific Island 93 4,248 899 5,240

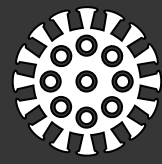
Asian-Pacific Isl & English Well 93 3,900 601

Asian-Pacific Isl & English Not Well 0 331 260 591

Other Language 88 794 59 941

Other Language & English Well 88 630 53

Other Lang. & English Not Well 0 156 6 162



KEY INDICATORS: IMPACT PLANNING

San Luis Obispo County, CA

287,468 **108,279** **2.51** **40.7** **\$74,462** **\$612,780** **129** **61** **58**

Population Households Avg Size Household Median Age Median Household Income Median Home Value Wealth Index Housing Affordability Diversity Index

POPULATION AND POVERTY STATUS (ACS) Total

Population for whom Poverty Status is Determined	264,128
Income to Poverty Ratio <0.50	20,046
Income to Poverty Ratio 0.50-0.99	16,374
Income to Poverty Ratio 1.00-1.24	9,876
Income to Poverty Ratio 1.25-1.49	8,145
Income to Poverty Ratio 1.50-1.84	16,180
Income to Poverty Ratio 1.85-1.99	5,506
Income to Poverty Ratio 2.00+	188,001

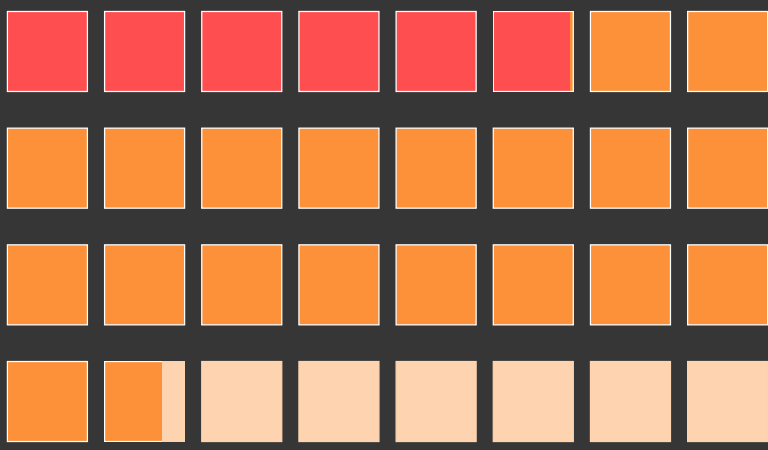
POVERTY LEVELS (ACS) Below At/Above Total

Total	13,175	91,869	105,044
Married Couple Families	2,162	51,253	53,415
Other Families w/Male Householder	425	3,855	4,280
Other Families w/Female Householder	1,794	6,976	8,770
Nonfamilies w/Male Householder	4,090	14,076	18,166
Nonfamilies w/Female Householder	4,704	15,709	20,413

NO HEALTH INSURANCE COVERAGE (ACS) % Total

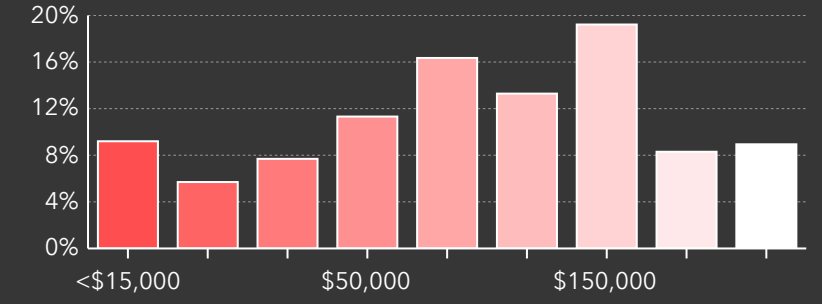
Population <19	1.3%	3,412
Population Age 19-34	3.5%	9,602
Population Age 35-64	3.7%	10,185
Population Age 65+	0.1%	205

POPULATION BY AGE

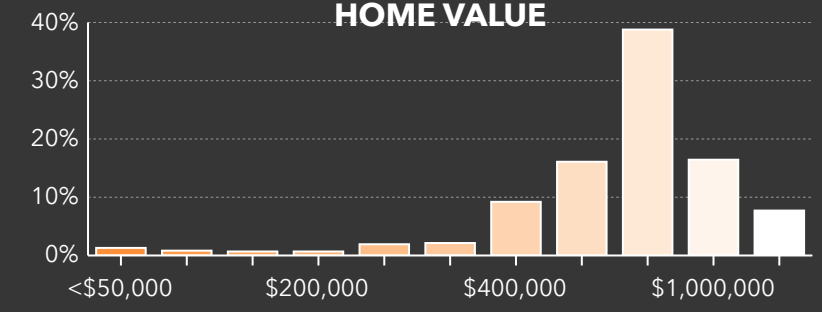


Under 18 (19.0%) Age 18 to 64 (63.0%) Age 65+ (20.0%)

HOUSEHOLD INCOME



HOME VALUE



HOUSING: YEAR BUILT

